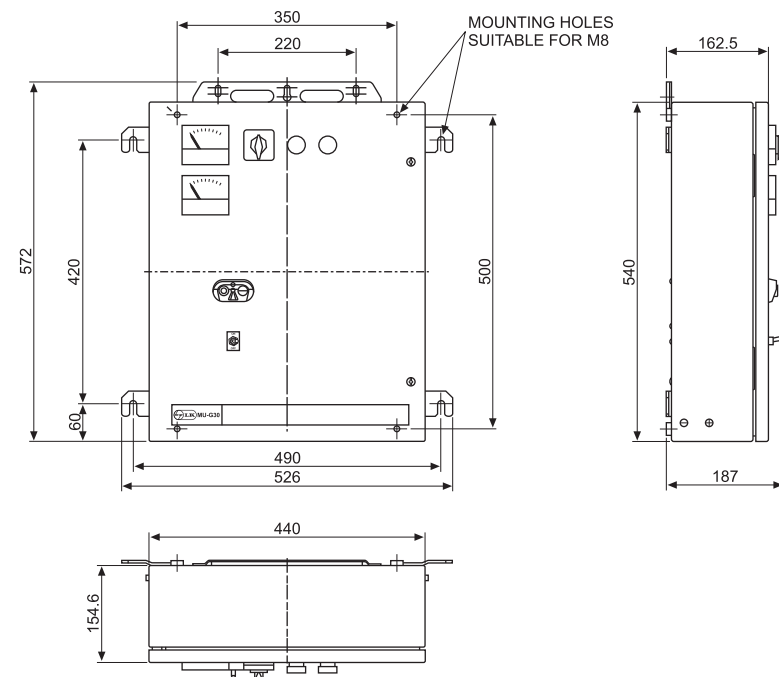


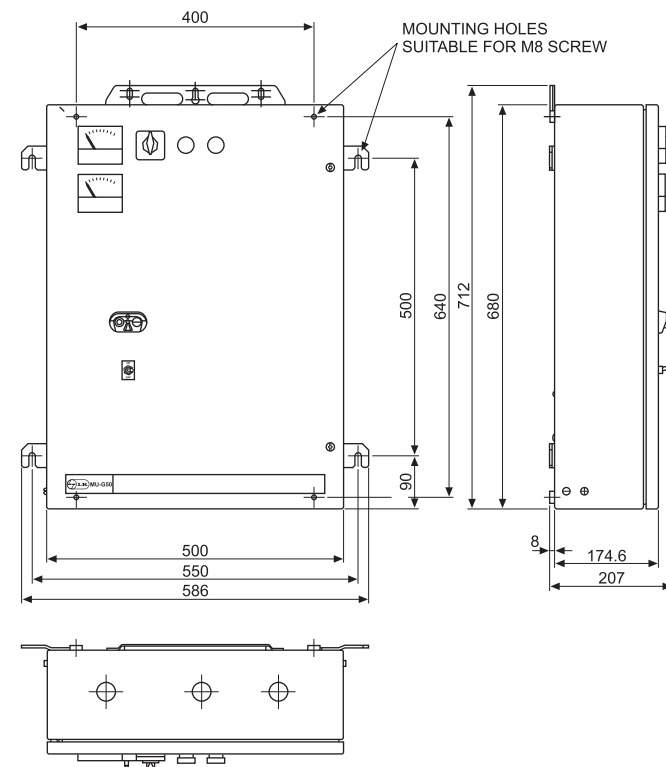


## Overall Dimension

### MUG30



### MUG50



Note: All dimensions are in mm.

Product improvement is a continuous process. For the latest information and special applications, please contact our office.

**L&T SWITCHGEAR**  
SAFE & SURE

Electrical Standard Products  
Electrical & Electronics Division  
Larsen & Toubro Limited  
Powai Campus, Mumbai 400 072  
Tel : 022-67052720  
Fax : 022-67051746  
email : ebg-esp@LNTEBG.com  
Website : www.LNTEBG.COM



**LARSEN & TOUBRO LIMITED**  
It's all about Imagineering

SP50477



# MUG30 & MUG50

Submersible Pump Controller



# MUG30 & MUG50

## Submersible Pump Controller



**MUG30**  
Submersible  
Pump Controller

### FEATURES FOR MUG30 & 50

1. Offers wide operating band (65-110%Uc)
2. Fitted with MN5 relay
3. Selector switch to see voltage of three phases.
4. Protection from negative phase sequence
5. Protection from overload
6. Protection from Single Phasing
7. Auto Restart (with 30 Sec. On delay)
8. Power ON and Pump ON indicator.
9. Voltmeter and Ammeter to check voltage and current.
10. Heavy duty sheet steel enclosures.

### TYPICAL APPLICATION FOR MUG30 & 50

1. Submersible water pumps



**MUG50**  
Submersible  
Pump Controller

### Technical Details for MUG30

|                               |  |
|-------------------------------|--|
| Rating                        | 30HP, 415 V 3ph  |
| Contactor                     | ML2 (wide band)  |
| Coil Voltage                  | 380 V  |
| Overload Relay                | MN5  |
| Relay Range                   | 20-33 A and 30-50 A  |
| Pick up Voltage               | 65% to 110% Uc   |
| Drop off Voltage              | 20% to 50% Uc  |
| Measurement Offered           | Ammerter with CT   |
|                               | Voltmeter with selector switch                             |
| Additional Protection Offered | Single phasing, Phase reversal<br>Phase unbalance (55±5 V) |
| Indicating Lamps              | Supply ON  |
|                               | Pump ON  |
| Rated Insulation Voltage      | 690 V  |
| Rated Operational Voltage     | 415 V  |
| Service Temperature           | -5 deg. cel to + 55 deg. Cel.                              |
| Conformity to standard        | IS 13947(Part 4/Sec1)                                      |
| Terminal Capacity             | 50 sq.mm with Lug  |
| No. of full start             | 30 per Hour  |
| Back up Protection            | Type 2 with HN fuses                                       |

### Ordering Details for MUG30

| Type                            | Relay Range (Amp) | Voltage | Catalogue No. |
|---------------------------------|-------------------|---------|---------------|
| MUG30<br>(FASD Pump Controller) | 20 - 33 A         | 415 V   | CS96008 COEO  |
|                                 | 30 - 50 A         | 415 V   | CS96008 COGO  |

### Technical Details for MUG50

|                               |                                |
|-------------------------------|--------------------------------|
| Rating                        | 50HP, 415 V, 3ph               |
| Contactor                     | ML4 (Wide band)                |
| Coil Voltage                  | 380 V                          |
| Overload Relay                | MN5                            |
| Relay Range                   | 30-50 A and 45-75 A            |
| Pick up Voltage               | 65% to 110% Uc                 |
| Drop off Voltage              | 20% to 50% Uc                  |
| Measurement offered           | Ammerter with CT               |
|                               | Voltmeter with selector switch |
| Additional protection offered | Single phasing, Phase reversal |
| Indicating Lamps              | Supply ON                      |
|                               | Pump ON                        |
| Rated Insulation Voltage      | 690 V                          |
| Rated Operational Voltage     | 415 V                          |
| Service Temperature           | -5 deg. cel to + 55 deg. cel   |
| Conformity to standard        | IS 13947 (Part 4/Sec1)         |
| No. of full start             | 30 per Hour                    |
| Back up protection            | Type 2 with HN fuses           |

### Ordering Details for MUG50

| Type                            | Relay Range (Amp) | Voltage | Catalogue No. |
|---------------------------------|-------------------|---------|---------------|
| MUG50<br>(FASD Pump Controller) | 30 - 50 A         | 415 V   | CS96009 COGO  |
|                                 | 45 - 75 A         | 415 V   | CS96009 COJO  |